

Clackamas Community College

2008 Community College Survey of Student Engagement (CCSSE)
Institutional Report

November 25, 2008

Today's Goals

- ✓ Review CCSSE purpose and goal
- ✓ Survey Selection and Return Rate
- ✓ Sample Characteristics
- ✓ CCSSE Benchmarks
- ✓ Where to find Overview, Summary of Findings and Detail Findings
- ✓ Q&A / Next Steps

CCSSE Recap

Let's Review

- 1994 – The Oregon Community College Consortium was created – working together to conduct research using a common tool
- The ACT (student opinion) 1994 – 2006
- The CCSSE (Community College Student Survey of Engagement) Administered for the first time in Winter 2008

CCSSE Recap

Why CCSSE?

- CCSSE focuses on all aspects of students' college experiences and their engagement in the learning process
 - Academic Challenge
 - Active and collaborative Learning
 - Student Effort
 - Student-Faculty Interaction
 - Support for Learners
- And, on educational practices associated with
 - Student Success
 - Retention
 - Student Persistence

The 2008 CCSSE Cohort

- 343,378 participants
- 48 states
- 585 colleges – 14 Oregon colleges
- 59% female; 41% male
- 38% full-time; 62% part-time
- 64% white; 12% black; 12% Latino /Hispanic; 6% Asian; 6% International; 2% Native American; and 4% other

Survey Selection and Return Rates

- A course master list of 848 courses and a codebook was submitted to CCSSE
- CCSSE performed the sample selection process
 - Randomly selected and stratified by time of day
- CCSSE returned a list of selected courses
 - 82 classes = 1133 students
 - Eventually 21 courses opted-out
 - Targeted number of completed surveys = 800
 - Adjusted usable surveys were 560 across 6 divisions
 - Excluded – incomplete answers; student is under age 18; student has already taken survey in prior class, and no indication of enrollment status
- Survey results were weighted and disaggregated on full-time /part-time status

Continued

Clackamas

- Percent of Classes Participating = 73%
- Overall Survey Completion Rate = 51%
- Percent of Within Class Completion Rate = 81%

Oregon Cohort

- Percent of Classes Participating = 82%
- Overall Survey Completion Rate = 51%
- Percent of Within Class Completion Rate = 62%

Other Medium Colleges

- Percent of Classes Participating = 86%
- Overall Survey Completion Rate = 51%
- Percent of Within Class Completion Rate = 60%

Survey Student Characteristics

Clackamas

- Male = 49%
- Female = 51%
- Am Indian = 1%
- Asian = 3%
- Black = 1%
- White = 82%
- *Hispanic = 3%
- Other = 5%
- *Full-time = 70%
- *Part-time = 30%

Our IPEDS Population

- Male = 48%
- Female = 52%
- Am Indian = 1%
- Asian = 4%
- Black = 1%
- White = 82%
- Hispanic = 6%
- Other = 6%
- Full-time = 33%
- Part-time = 67%

Other Medium Colleges

- Male = 40%
- Female = 60%
- Am Indian = 1%
- Asian = 5%
- Black = 13%
- White = 64%
- Hispanic = 11%
- Other = 6%
- Full-time = 39%
- Part-time = 61%

* Our Hispanic population under surveyed; inverse representation of FT and PT students may be due to sampling technique and in classroom administration process – results weighted

CCSSE Benchmarks

CCSSE utilizes a set of 5 benchmarks (38 engagement items) of effective educational practices...

- ✓ Active and Collaborative Learning
- ✓ Student Effort
- ✓ Academic Challenge
- ✓ Student-Faculty Interaction
- ✓ Support for Learner

... that are associated with student success, persistence and retention and are designed to help institutions gauge and monitor performance in areas central to our work.

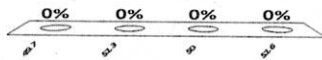
CCSSE Benchmark

Survey Items Associated with Active and Collaborative Learning

- Asked questions in class or contributed to class discussions
- Made a class presentation
- Worked with other students on projects during class
- Tutored or taught other students (paid or voluntary)
- Participated in a community-based project as a part of a regular course
- Discussed ideas from your readings or classes with others outside of class (students, family members, co-workers, etc.)

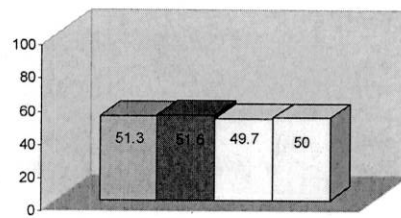
How do Clackamas students perceive their 'Active and Collaborative Learning' opportunities compared to other Oregon colleges?

1. 49.7
- ✓ 2. 51.3
3. 50.0
4. 51.6



1	2	3	4	5	6	7	8	9	10	11	12	13	14	15	16	17	18	19	20
21	22	23	24	25	26	27	28	29	30	31	32	33	34	35	36	37	38	39	40

Active and Collaborative Learning



■ Clackamas
 ■ Other OR Colleges
 □ Other Medium sized Colleges □ 2008 CCSSE Cohort

CCSSE Benchmark

Survey Items Associated with Student Effort

- Prepared two or more drafts of a paper or assignment before turning it in
- Worked on a paper or project that required integrating ideas or information from various sources
- Came to class without completing readings or assignments
- Number of books read on your own (not assigned) for personal enjoyment or academic enrichment
- Preparing for class (studying, reading, writing, rehearsing, doing homework, or other activities related to your program
- Frequency: Peer or other tutoring
- Frequency: Skills labs (writing, math, etc.)
- Frequency: Computer lab

How do Clackamas students perceive their 'Student Effort' compared to other Oregon colleges?

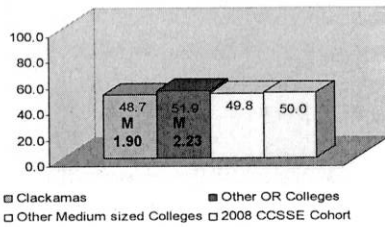
1. 50.0
2. 51.9
- ☆3. 48.7
4. 49.8



1	2	3	4	5	6	7	8	9	10	11	12	13	14	15	16	17	18	19	20
21	22	23	24	25	26	27	28	29	30	31	32	33	34	35	36	37	38	39	40

0% 0% 0% 0%

Student Effort



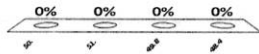
Significantly below the Mean - 10a. Preparing for class (studying, reading, writing, rehearsing, doing homework, or other activities related to your program

Survey Items Associated with Academic Challenge

- Worked harder than you thought you could to meet an instructor's standards or expectations
- Analyzing the basic elements of an idea, experience, or theory
- Synthesizing and organizing ideas, information, or experiences in new ways
- Making judgments about the value or soundness of information, arguments, or methods
- Applying theories or concepts to practical problems or in new situations
- Number of assigned textbooks, manuals, books or book-length packs of course readings
- Number of written papers or reports of any length
- ... extent to which your examinations during the current schools year have challenged you to do your best work
- Encouraging you to spend significant amounts of time studying

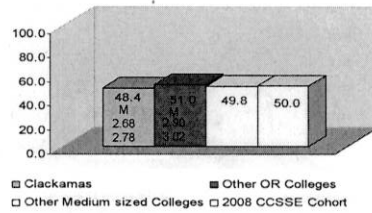
How do Clackamas students perceive their 'Academic Challenge' compared to other Oregon colleges?

1. 50.0
2. 51.0
3. 49.8
- ☆4. 48.4



1	2	3	4	5	6	7	8	9	10	11	12	13	14	15	16	17	18	19	20
21	22	23	24	25	26	27	28	29	30	31	32	33	34	35	36	37	38	39	40

Academic Challenge



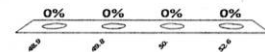
Significantly below the Mean - 6a. Number of assigned textbooks, manuals, books, or book-length packs of course readings
6c. Number of written papers or reports of any length

Survey Items Associated with Student-Faculty Interaction

- Used email to communicate with an instructor
- Discussed grades or assignments with an instructor
- Talked about career plans with an instructor or advisor
- Discussed ideas from your readings or classes with an instructor outside of class
- Received prompt feedback (written or oral) from instructors on your performance
- Worked with instructors on activities other than coursework

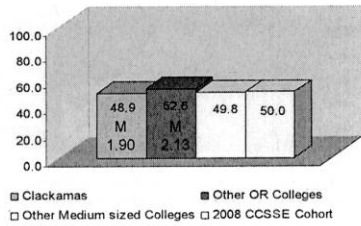
How do Clackamas students perceive their 'Student-Faculty Interaction' compared to other Oregon colleges?

- ☆1. 48.9
2. 49.8
3. 50.0
4. 52.6



1	2	3	4	5	6	7	8	9	10	11	12	13	14	15	16	17	18	19	20
21	22	23	24	25	26	27	28	29	30	31	32	33	34	35	36	37	38	39	40

Student-Faculty Interaction



Significantly below the Mean - 4m. Talked about career plans with an instructor

Survey Items Associated with Support for Learners

- Providing the support you need to help you succeed at this college
- Encouraging contact among students from different economic, social, and racial or ethnic backgrounds
- Helping you cope with nonacademic responsibilities (work, family, etc.)
- Providing the support you need to thrive socially
- Providing the financial support you need to afford your education

During the current school year, how often have you:

- How often have you used academic advising/planning services
- Used career counseling services

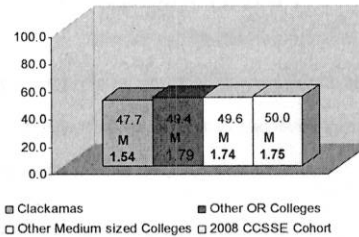
Support for Learners

- ☆1. 47.7
- 2. 49.6
- 3. 50.0
- 4. 49.4



1	2	3	4	5	6	7	8	9	10	11	12	13	14	15	16	17	18	19	20
21	22	23	24	25	26	27	28	29	30	31	32	33	34	35	36	37	38	39	40

Support for Student Learners



Significantly below the Mean - 13a1. Frequency: Academic advising/planning

**CCSSE survey results
can be accessed from the
C&R Website**

<http://depts.clackamas.edu/curric-reporting>

